

The Pennsylvania State University
COLLEGE OF EDUCATION

Student: _____

PSU ID Number: _____ E-Mail _____

Adviser: _____

WORLD LANGUAGES (K-12) EDUCATION
Bilingual Education Teaching Option**
(See back for info on entrance, retention, and exit criteria)

DR. P. SHANNON, Contact Person
135-141 Credits Required
EFFECTIVE MAY 2008

<http://www.ed.psu.edu/>

I. GENERAL EDUCATION COMPONENTS
45 Cr.

(Select appropriate courses listed in the General Education Bulletin. Note that General Education courses may not be taken SA/UN.)

WRITING/SPEAKING (GWS) – 9 Cr.

- **ENGL 15 GWS or 30 GWS** _____ (3)
- ENGL 202A GWS or 202B GWS _____ (3)
- CAS 100A GWS _____ (3)

QUANTIFICATION (GQ) – 6 Cr.

- _____ (3)
- _____ (3)

NATURAL SCIENCES (GN) – 9 Cr.

- _____ (3)
- _____ (3)
- _____ (3)

ARTS (GA) – 6 Cr.

- _____ (3)
- _____ (3)

HUMANITIES (GH) – 6 Cr.

- **(Literature selection)** _____ (3)
- (GH selection)** _____ (3)

SOCIAL & BEHAVIORAL SCIENCES (GS) – 6 Cr.

- **(HD FS 229 GS)** _____ (3)
- (ANTH 45 GS, IL, US or HD FS 239 GS) _____ (3)

HEALTH AND PHYSICAL ACTIVITY (GHA) – 3 Cr.

- _____ () _____ () _____ ()

II. FIRST YEAR SEMINAR (FYS)/ELECTIVES 0- 3 Cr.
(FYS) _____ ()

Pre-certification Competency Exam or SPLED 400 _____
PRAXIS: PPST •(R) _____ •(M) _____ •(W) _____
 Fund. Subj CK: _____
 Specialty Test(s) _____

III. REQUIREMENTS FOR THE MAJOR
54 Cr.

Prescribed Courses – 48 Cr.+

- **EDPSY 14** _____ (3)
- **EDTHP 115 US** _____ (3)
- **WL ED 295A** _____ (3)
- **WL ED 300** _____ (3)
- **HD FS 229 GS** _____ (3)*
- A ED 303 _____ (3)
- MUSIC 241 _____ (3)
- WL ED 411 _____ (3)
- WL ED 412 _____ (3)
- WL ED 495B _____ (3)
- WL ED 495C _____ (3)
- C I 495E _____ (15)

Additional Courses – 6 Cr.+

- C I 412W or LL ED 402 or WL ED 422 _____ (3)
- HD FS 239 GS* or ^PPSYCH 412 or SPLED 400 _____ (3)

CODES:

+ Must earn “C” or better (C I 495C offered SA/UN only).

° See adviser for prerequisites and early application for clinical experiences.

* The following courses may satisfy General Education components: HD FS 229 GS and ANTH 45 GS, IL, US or HD FS 239 GS (Social & Behavioral Science); 3-6 credits of additional GH (Humanities) selections.

WL ED 412 prerequisites are underlined above.

^P See Baccalaureate Degree Programs Bulletin for prerequisites.

W Satisfies 3 credits of writing-intensive course requirement.

• Course required for selection to major/certification program.

IV. OPTION REQUIREMENTS
46-50Cr.

• **Qualify** for enrollment in FR 201, GER 201 IL, LATIN 400, RUS 204 or SPAN 200 by exam or coursework.

Prescribed Courses – 9 Cr.+

- WL ED 414 _____ (3)
- WL ED 422 _____ (3)
- WL ED 444 _____ (3)

Additional Courses 6 Cr.+

Select 6 credits of \geq 300 level related courses recommended by department. _____ (3)

Additional Requirements 31-35 Cr.

Complete 31 to 35 credits of designated courses to fulfill teaching option for French, German, Latin, Russian or Spanish.

Note: Must complete at least 3 cr. of IL and 3 cr. of US Cultures selections. plus 3 cr. W selection.

Participation in an approved Education Abroad Program (IL) is required, typically during semester 6 (Spring or Summer).

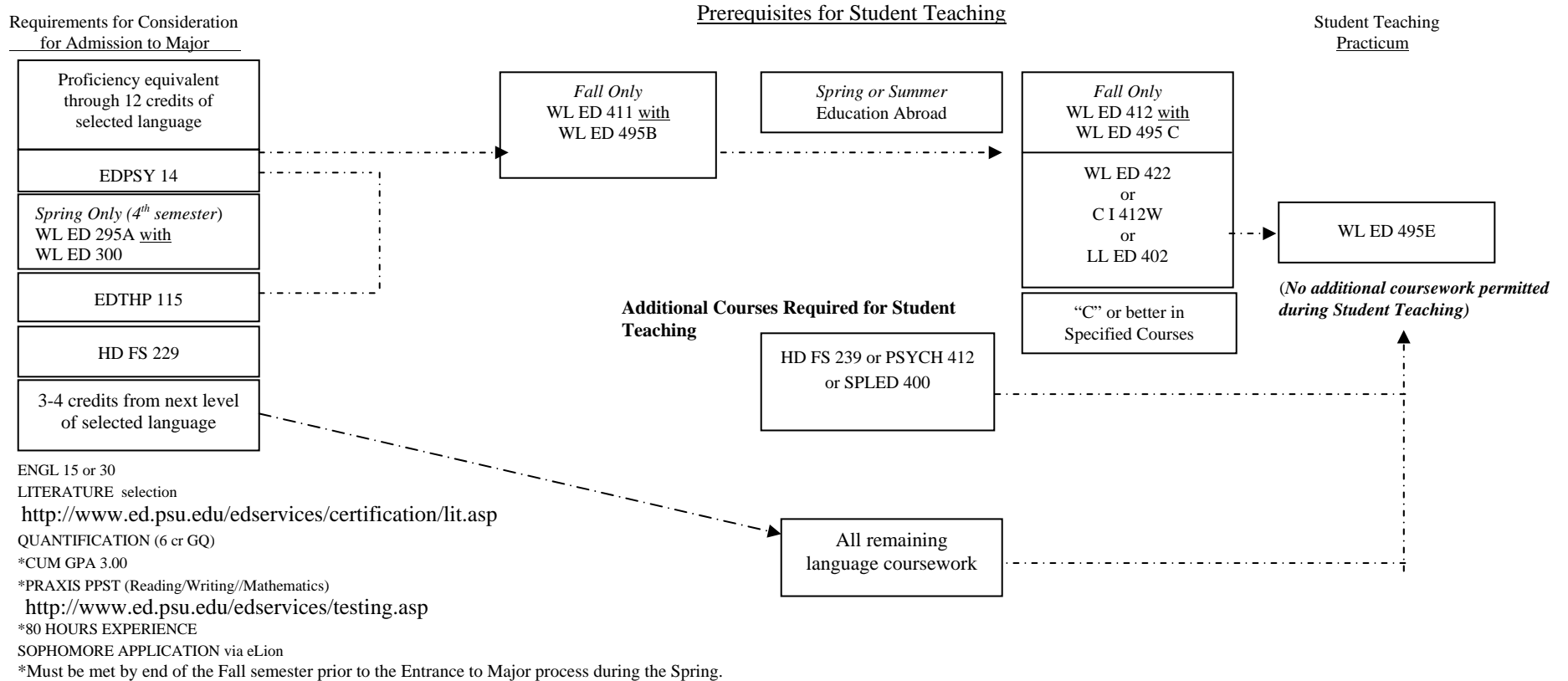
**** BILNG option must be completed in conjunction with FR, GER, LATIN, RUS or SPAN teaching options.**
(Unlike many other states PA does not issue teacher certification in Bilingual Education)

WORLD LANGUAGES EDUCATION - - Bilingual Teaching Option: Entrance Criteria

Eligibility for entrance to the Bilingual teaching option in the World Languages Education (WL ED) major is based on: (1) formal application, (2) completion of specified prerequisites, and (3) cumulative grade point average. (See Entrance to Major (ETM) information available from your adviser, or at http://www.ed.psu.edu/edservices/certification/ent_criteria.asp).

Students must participate in a formal Entrance to Major process in a designated selection pool typically during the fourth semester in the Spring. New students from other institutions and current Penn State students who wish to be considered for a change of major into WL ED also participate in appropriate, designated selection pools.

General sequences and block scheduling patterns of certain required courses follow. (This is not a complete semester-by-semester schedule.) General Education Courses and Prescribed, Supporting, and Additional Courses should be completed prior to student teaching.



RETENTION and EXIT CRITERIA

Candidates for the baccalaureate degree and a Pennsylvania teacher certificate must (1) maintain throughout the program of study the cumulative grade point average required for admission to the program, and complete, (2) the academic program requirements, (3) the Pre-Certification Competency Examination on Educating the Handicapped, and (4) the applicable tests and clearances required by the Pennsylvania Department of Education.

For complete information about Entrance/Retention/Exit Criteria applicable to teacher preparation programs, and eligibility for Pennsylvania Teacher Certification, please see: http://www.ed.psu.edu/edservices/certification/ent_criteria.asp

Questions? Please contact your adviser, the program (865-6565), the Office of the Dean (865-0488), or <http://www.ed.psu.edu/ci/ugIndex.html>