

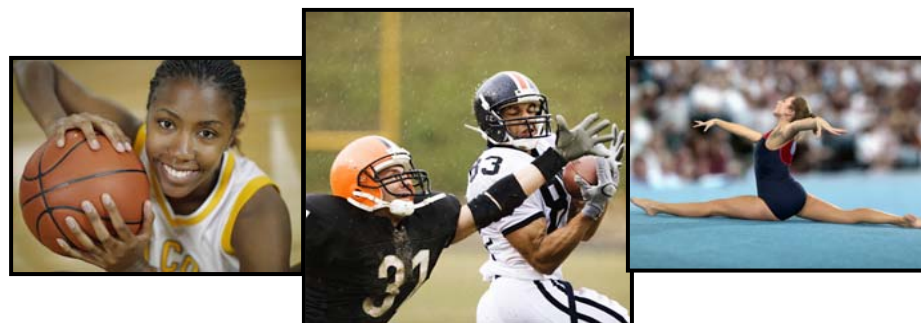
The Pennsylvania School Study Council  
The Pennsylvania State University  
200 Rackley Building  
University Park, PA 16802



The Pennsylvania  
School Study Council,  
The Pennsylvania State Athletics  
Directors Association  
and Penn State Intercollegiate  
Athletics

## *2010 Academics and Athletics Workshop:*

*Issues Facing Administrators,  
Counselors, Athletic Directors & Coaches*



*Hear updates on NCAA compliance guidelines, financial aid and admissions.  
Learn about the recruitment process.  
Network with Penn State coaches and others from around the state!*

Thursday, September 23, 2010

8:30 a.m. – 2:30 p.m.

Founders Lounge, Bryce Jordan Center  
University Park, PA

PENNSTATE



*Academics and Athletics: Issues Facing Administrators,  
Counselors, Athletic Directors & Coaches  
Founders Lounge, Bryce Jordan Center  
University Park, PA*

**8:30 am - 8:45 am**      **Registration, Parking Passes, and Continental Breakfast**

**8:45 am - 9:00 am**      **Welcome and Introductions**

**Presenter: Tim Curley, Athletic Director**

**9:00 am - 10:00 am**      **NCAA Eligibility Updates**

**Presenters: Bruce Ellis, Assistant Athletic Director for Student Athlete Services and Matt Stolberg, Associate Athletic Director for Compliance & Student Athlete Services**

*This presentation will discuss the certification of a high school prospect's initial eligibility and amateurism, including variations among Divisions. Valuable information will be shared regarding the NCAA Eligibility Center and any new NCAA legislation that relates to: core curriculum requirements, amateurism, certification, high school reviews, official visits, signing an NLI and offer of athletic aid, early initial eligibility certifications, and the core curriculum time limit.*

**10:10 am - 11:30 am**      **Assessment and Management of Sports-Related Concussion**

**Presenter: Nathan Kegel, Ph.D. Neuropsychology Fellow, UPMC Sports Medicine Concussion Program**

*Assessment and management of sports-related concussion has evolved a great deal over the past decade. This presentation will briefly review pathophysiology and subsequent signs and symptoms of concussion, before moving on to an in-depth discussion of neurocognitive assessment as it relates to standard practices in management. Practical applications and current research will be addressed.*

**11:30 am - 12:20 pm**      **Lunch (provided) with Penn State coaches-Room F**

**12:20 pm - 1:10 pm**      **Admissions and Financial Aid**

**Presenters: Todd Moss, Assistant Director, Office of Student Aid and Moradeyo Olorunnisola, Lead Admissions Counselor, Penn State Undergraduate Admissions**

*The admission process is complicated and varies from school to school. Student athletes and those who advise them also have NCAA requirements to consider adding, another layer of complexity. This session will discuss Penn State's admission process including D-1 requirements.*

**1:10 pm - 2:35 pm**      **Gender Equity in Interscholastic Athletics**

**Presenter: Peg Pennepacker, C.A.A.**

*A practical and basic discussion about gender equity in interscholastic athletics including Title IX, the High School Accountability Act, booster clubs, cheerleading and other related topics. The discussion will also include proactive measures schools can take to move toward Title IX compliance within their athletic program.*

**2010 Academics & Athletics Workshop  
Registration Form**

Name \_\_\_\_\_

School District/Organization \_\_\_\_\_

Position \_\_\_\_\_

Street Address \_\_\_\_\_

City \_\_\_\_\_ State \_\_\_\_\_ Zip \_\_\_\_\_

Telephone ( \_\_\_\_\_ ) \_\_\_\_\_ - \_\_\_\_\_

Email: \_\_\_\_\_ @ \_\_\_\_\_

**Member discount:** PSSC and PSADA members receive a discounted rate of \$130.00 plus added discounts on fees for additional member registrations!!  
(Check with your school administrators to find out if your district is a PSSC member)

**Additional Registrations:** A discount is available to PSSC and PSADA members for any additional registrations when submitted as a group. To receive the discount, attach a registration form for each additional individual attending.

**REGISTRATION SUMMARY:** (fees include parking, continental breakfast and lunch)

\_\_\_\_\_ **Individual PSSC or PSADA Member registration @ \$130**      \$ \_\_\_\_\_

\_\_\_\_\_ **Additional PSSC or PSADA Member registration(s)  
@\$100 each**      \$ \_\_\_\_\_

\_\_\_\_\_ **Individual Non-Member registration @ \$155 each**      \$ \_\_\_\_\_

\$ \_\_\_\_\_

**AMOUNT DUE:**

Please enter the amount due and enclose a check OR school district purchase order payable to **PSSC**.

**PO#** \_\_\_\_\_

**LODGING:**

Reduced rate lodging is available at the Holiday Inn Express in State College (814-867-1800) if reservations are made by **Wednesday September 15, 2010**. Please mention you are with the Pennsylvania School Study Council. **Group Code "PSC"**

Please complete and return by **Wednesday September 15, 2010** to:

**PSSC  
200 Rackley Building  
University Park, PA 16802  
FAX: (814) 865-0700**